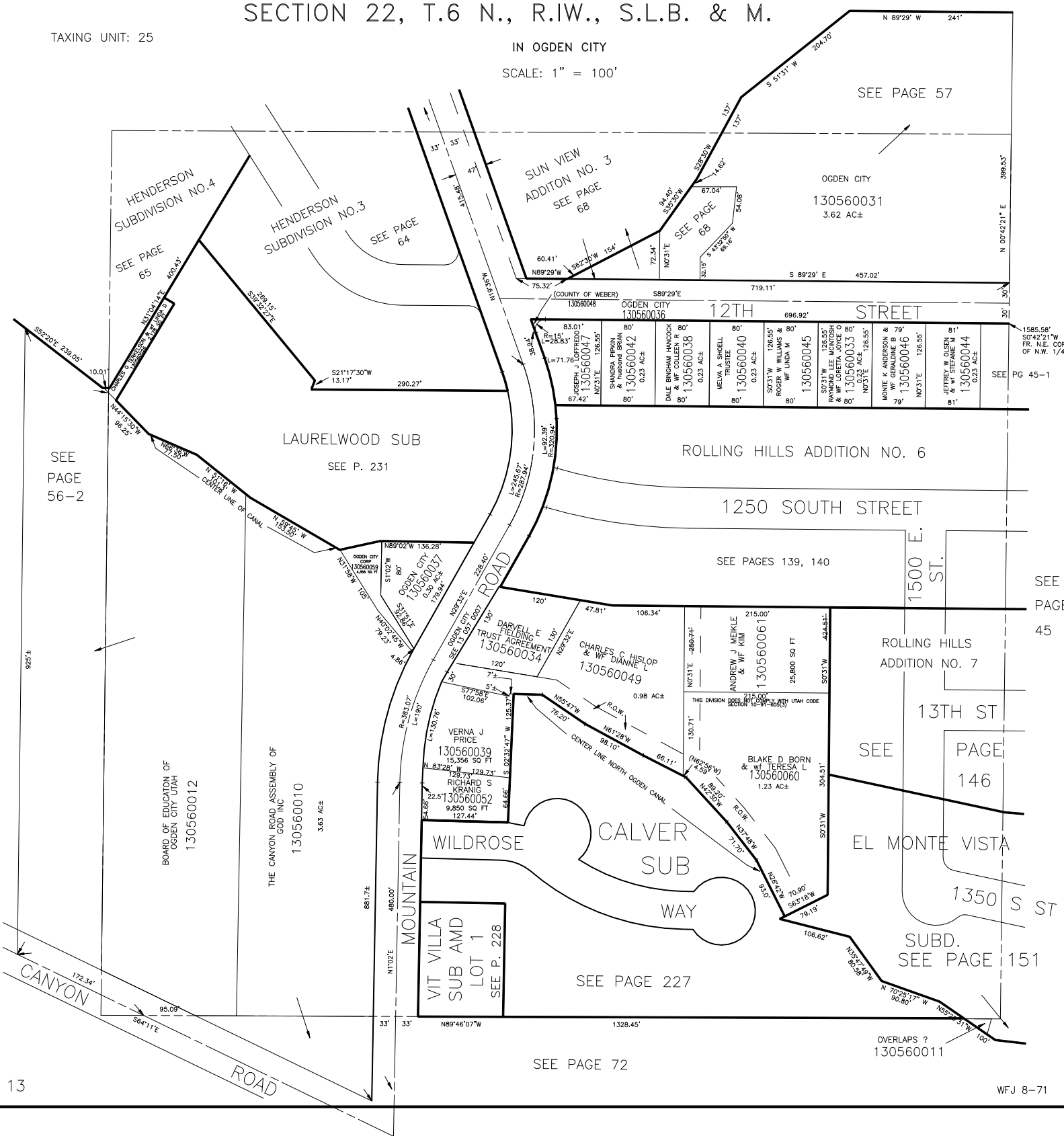


S.E. 1/4 OF N.W. 1/4  
SECTION 22, T.6 N., R.1W., S.L.B. & M.

TAXING UNIT: 25

IN OGDEN CITY  
SCALE: 1" = 100'



SEE PAGE 57

HENDERSON  
SUBDIVISION NO. 4  
SEE PAGE 65

HENDERSON  
SUBDIVISION NO. 3  
SEE PAGE 64

SUN VIEW  
ADDITON NO. 3  
SEE PAGE 68

OGDEN CITY  
130560031  
3.62 AC±

SEE  
PAGE  
56-2

LAURELWOOD SUB  
SEE P. 231

ROLLING HILLS ADDITION NO. 6

1250 SOUTH STREET

SEE PAGES 139, 140

1500 ST.

SEE  
PAGE  
45

ROLLING HILLS  
ADDITION NO. 7

13TH ST

SEE  
PAGE  
146

EL MONTE VISTA

1350 S ST

SUBD.  
SEE PAGE 151

OVERLAPS ?  
130560011

SEE PAGE 72